



### 一、卫生泵系列 Sanitary Pump Series

1.1、卫生型离心泵 Sanitary Centrifugal Pump ..... Page 2-19

1.2、卫生型自吸泵 Sanitary Self-priming Pump ..... Page 21-26

## 应用

SFB系列卫生型离心泵广泛适用于各类液体物料的输送，如乳品、啤酒、饮料、医药化工等领域。

## 性能和优越性

SFB系列卫生型离心泵为单级、单吸、开式叶轮。泵壳、叶轮、叶轮座经精心设计，减小了阻力，消除了卫生死角，加快了泵内液体的流速，从而提高了泵的整体性能。叶轮的开式设计保证了最佳的可清洗性(CIP)，具有卓越的卫生性能。在产品处理过程中具有满足卫生要求、平稳性、高效率和易于维护等优点。泵由四只可调支撑，出口可回转任意角度，从而大大提高了安装和使用范围。

## 轴封

SFB卫生型离心泵的轴封采用机械密封。其密封性能好，自润滑性能高，耐磨、耐高温、耐腐蚀、无泄漏、装拆方便。有带水冲洗的单端面机械密封和带水冲洗的双面机械密封两种。所有机械密封零件更换方便、维修快捷、成本经济，均可互换，使泵的寿命最大化。

## 材质

过液部分材质：316L或304不锈钢

其它部分材质：304不锈钢

辅助密封材料：三元乙丙橡胶(EPDM)、硅橡胶(VMQ)、氟橡胶(FKM)、聚四氟乙烯(PTFE)

机械密封材料：石 墨—碳化硅

碳化硅—碳化硅

硬质合金—硬质合金

## 表面处理

过液部分抛光 $0.8\mu\text{m}$ ，其余哑光或喷砂处理 $1.6\mu\text{m}$

对于更高洁净要求，过液部分抛光 $0.4\mu\text{m}$

## Application

SFB Sanitary Centrifugal Pump series is widely used in the transportation of liquid materials in dairy, beer, beverage, pharmaceutical and chemical industries.



## Features and advantages

SFB Sanitary Centrifugal Pump series features single-stage, single suction and open-style impeller. The casing, impeller and back plate are well designed to reduce resistance, eliminate dead space and quicken the flow in the pump, thus to improve its overall performance. The open-style impeller ensures the best cleanability (CIP) and outstanding Sanitary performance. There are still other advantages such as stability, high efficiency and easy maintenance. Furthermore, Adjustable supporting legs, any angle that the outlet can be positioned, all these provide convenience of installation and operation.

## Shaft Seal

SFB Sanitary Centrifugal Pump series adopts mechanical seal that provides the advantages of good sealing performance, self-lubricity, resistance to wear, high temperature and corrosion; leakage-free, easy installation and disassembly. Both single and double end face mechanical seal are available, and both with water flush. All the parts of mechanical seal are easy to be replaced and maintained, cost-effective and interchangeable to prolong the service life of the pump.

## Material

Medium-contacting Parts : 304 or 316L stainless steel

Other parts: 304 stainless steel

Auxiliary seal: EPDM, VMQ, FKM, PTFE

Machinery sealed material: C-SiC

SiC-SiC

TC-TC

## Surface treatment

Medium-contacting Parts: polishing,  $Ra \leq 0.8\mu\text{m}$ , other parts: matt or sandblasting  $1.6\mu\text{m}$ .

For higher cleanliness requirements, the over-liquid will be partially polished by  $0.4\mu\text{m}$ .

## 技术参数

最大进口压力: 0.5MPa

温度范围: -10°C至+140°C(EPDM)

可冲洗机械密封:

水压: 最高0.1MPa

水量: 0.25~0.5L/min

## 电机:

电机:

1.根据配置采用“ABB”,“SIEMENS”,“WEG”品牌的三相交流电机,按照国际电工委员会IEC60034、IEC60072标准设计制造。

其中“ABB”符合欧盟“CE”标记要求。

“WEG”符合北美“CSA”、“UL”认证

“SIEMENS”符合欧盟“CE”标记要求。

2.可供选变频电机、防爆电机,以满足不同场合需要。防爆等级为Ex d II B (C) T4,都为隔爆电机,可用于1区,2区隔爆“BEIDE”为Ex d II B T4,“ABB”,Ex d II C T4。

3.优越的电器性、低噪音、低振动,电机的标准设计防护等级为IP55,绝缘等级为F级。

4.工作电压:

≤3Kw, 220~240V/380~420V, Δ/Y

>3Kw,380~420V/660~690V, Δ/Y

5.频率:

公频电机(常规): 50Hz/60Hz

可用于短时间宽频调节,恒转矩调频范围30~50Hz

恒功率调频范围50~60Hz

变频电机:

可用于连续工作变频调节,恒转矩调频范围5~50Hz

恒功率调频范围50~70Hz

6.工作方式:连续(SI)

7.转速:标准泵转速为2900r/min

## Technical parameters

Max. inlet pressure:0.5MPa

Temperature range: -10 °C ~+140°C(EPDM)

Flushable mechanical seal:

Water pressure: max 0.1MPa

Flow rate: 0.25 ~0.5L/min

## Motor

1. ABB、SIEMENS、WEG three phase alternating current motor is mainly adopted. It is produced in compliance with IEC60034/IEC60072 standards and CE of EU.

Among them "ABB" accords with eu "CE" mark requirement.

"WEG" conforms to the north American "CSA" and "UL" certification

"SIEMENS" accords with eu "CE" mark requirement.

2. Anti-explosion motor is available to meet requirements on different occasions.Ex explosion-proof level for d II B (C) T4, for the flame-proof motor and can be used for 1, 2 area flame-proof "BEIDE" for the Ex d II B T4, "ABB", the Ex d II C T4.

3. Outstanding electrical properties, low noise, low vibration, standard IP Grade is IP55, insulation class is grade F.

4. Working voltage:

≤3Kw,220 ~240V/380 ~420V, Δ/Y

>3Kw, 380 ~420V /660 ~690V, Δ/Y

5. Frequency: Common frequency motor (routine) : 50Hz/60Hz

Can be used for short time broadband adjustment, constant torque frequency range of 30~50Hz

Constant power frequency range 50~60Hz

Variable frequency motor:

Can be used for continuous working frequency conversion adjustment, constant torque frequency range 5~50Hz

Constant power frequency range of 50~70Hz

6. Working mode: continuous (SI)

7. Rotating speed: standard: 2900r/min

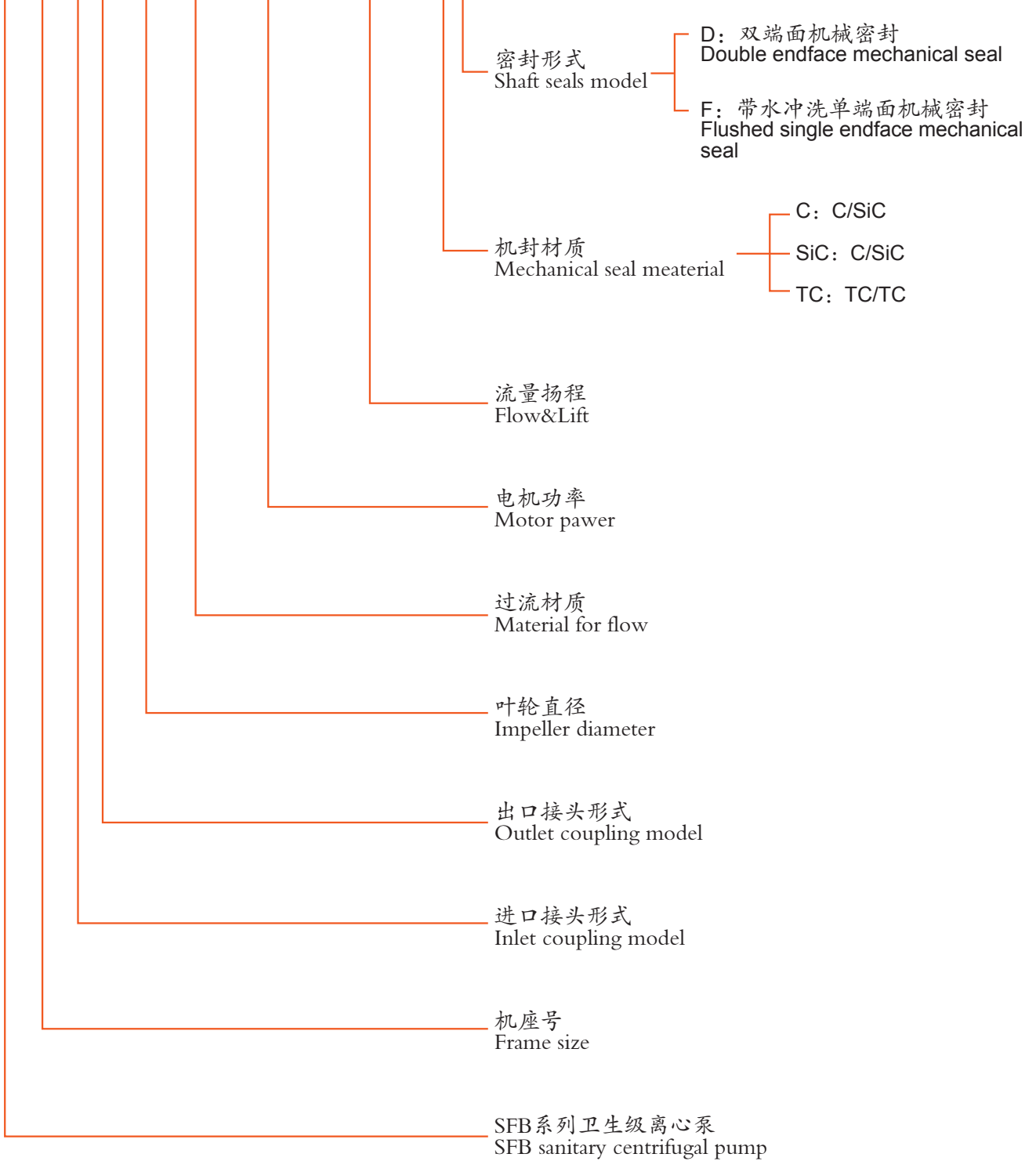
# SFB卫生型离心泵型号说明

## Model description of SFB Sanitary Centrifugal Pump

示例: (Example)

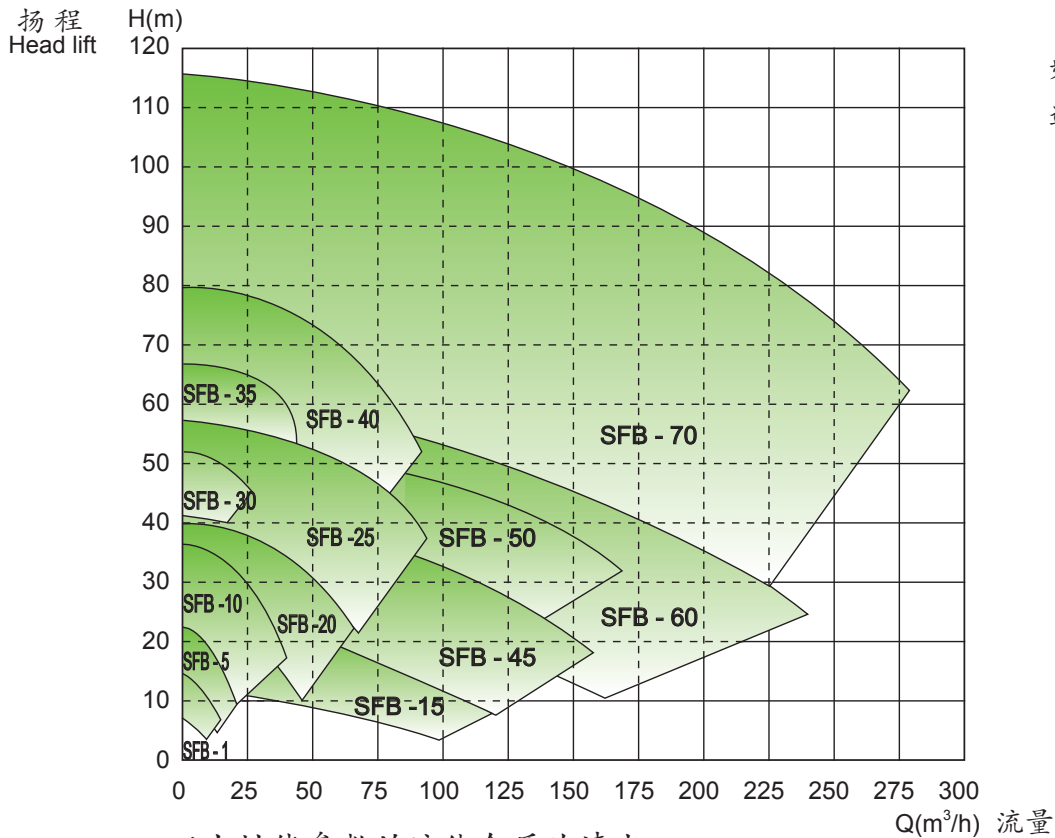
SFB 10 - A A 140-316L - 1.5 KW - 10T24M - C D

卫生泵系列



## SFB系列卫生型离心泵选型图

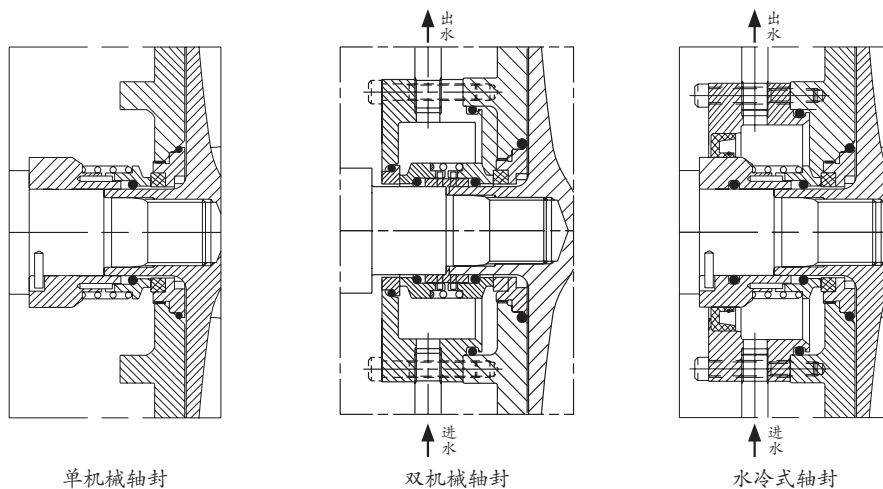
Available models of SFB Sanitary Centrifugal Pump Series



以上性能参数的流体介质为清水。  
The medium of above performance figures is clean water

卫生泵系列

### 机封选型

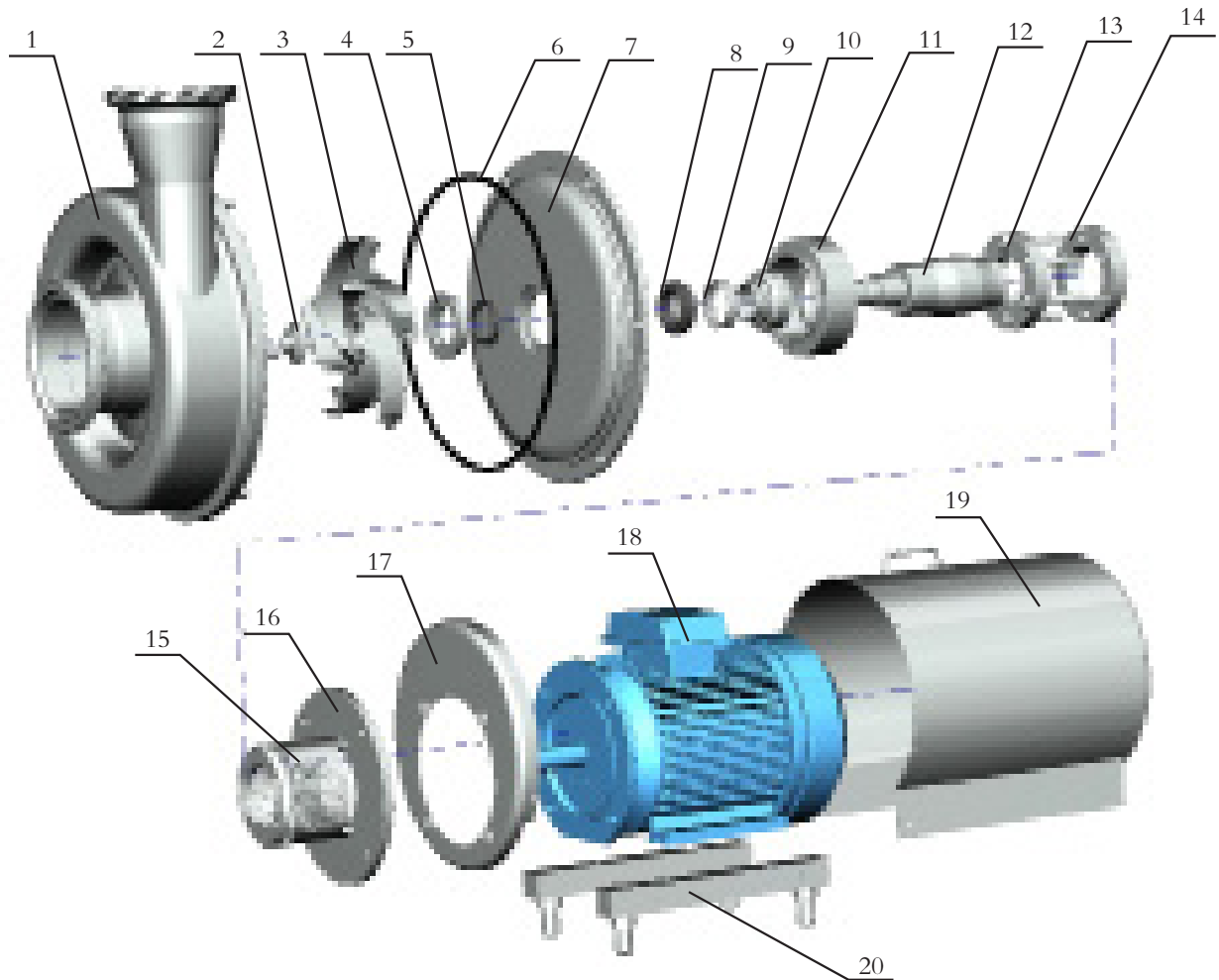


**注意！如需要了解更多情况，请与本公司联系。**  
**Attention: please contact our Company to know further information.**

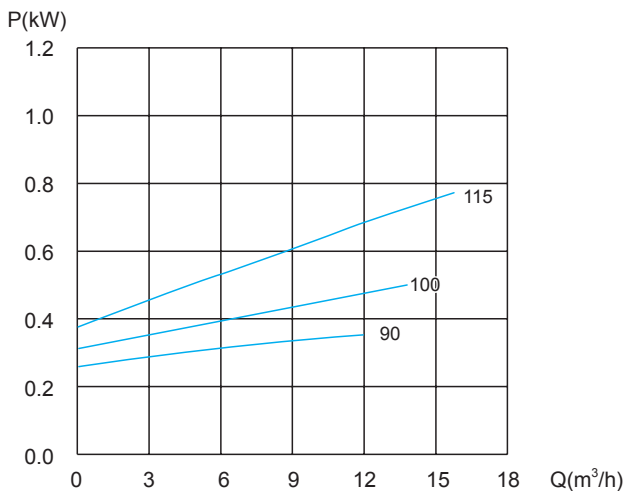
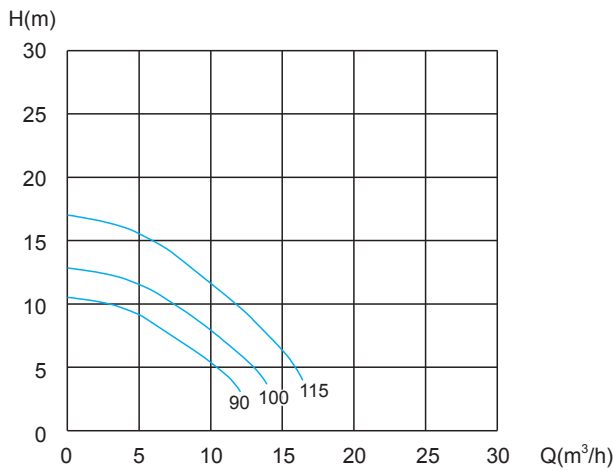
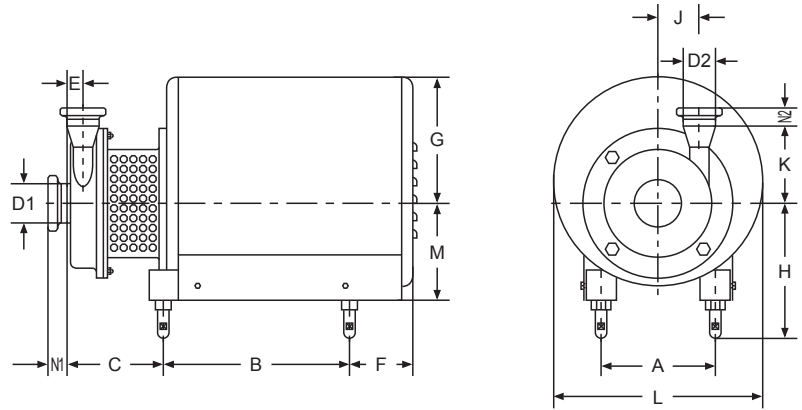
### SFB系列卫生型离心泵结构分解图

Decomposition chart of the structure for SFB Sanitary Centrifugal Pump

卫生泵系列



- |                           |                       |                                  |                         |                                      |
|---------------------------|-----------------------|----------------------------------|-------------------------|--------------------------------------|
| 1、泵壳<br>Pump casing       | 5、静环<br>Static ring   | 9、弹簧<br>Spring                   | 13、连轴器（一）<br>Coupler(1) | 17、电机罩前盖<br>Front cover of the motor |
| 2、轴帽<br>Cup socket        | 6、O形圈<br>O-ring       | 10、驱动环<br>Drive collar           | 14、连轴器（二）<br>Coupler(2) | 18、马达<br>Motor                       |
| 3、叶轮<br>Impeller          | 7、背板<br>Back Plate    | 11、机械密封座<br>Mechanical seal seat | 15、防护板<br>Shield        | 19、罩壳<br>Cover                       |
| 4、静环座<br>Static ring seat | 8、动环<br>Rotating ring | 12、主轴<br>Principal axis          | 16、支座<br>Bracket        | 20、支脚<br>Stand                       |



### SFB-1外形安装尺寸 Dimensions

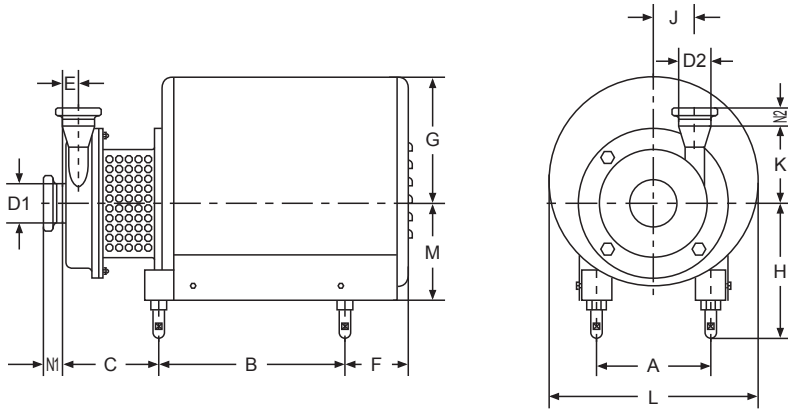
Size	电机功率(Motor Power)				
	0.55KW	0.75KW	1.1KW		
A	112	125	125		
B	210	230	230		
C	94	94	94		
E	22	22	22		
F	70	70	70		
G	140	140	140		
H max	170	180	180		
H min	140	150	150		
J	51	51	51		
K	115	115	115		
L	240	240	240		
M	100	110	110		

Size	ISO卡箍	DIN卡箍	SMS活接	DIN活接	ISO法兰	DIN法兰
D1	38.1	40	38.1	40	38.1	40
D2	25.4	28	25.4	28	25.4	28
N1	21.5	21.5	20	22	25	24
N2	21.5	21.5	15	22	25	24

### 性能曲线 Performance Curve

介质: 20°C清水 误差: ±5% Medium: 20°C clean water Error: ±5%	转速: 2900r/min 频率: 50Hz Rotating Speed: 2900r/min Frequency: 50Hz	叶轮: 最大直径: 115mm 最小直径: 90mm Impeller: Max.Dia.: 115mm Min.Dia.: 90mm	进口通径: Φ38.1 DN40 出口通径: Φ25.4 DN25 Inlet Diameter: Φ38.1 DN40 Outlet Diameter: Φ25.4 DN25
---	---	--	---

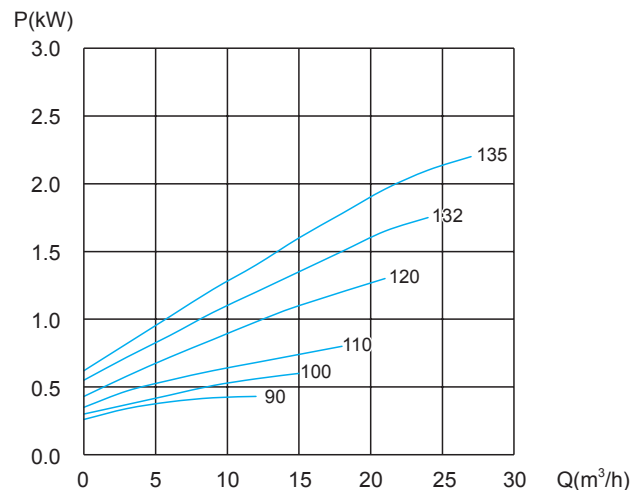
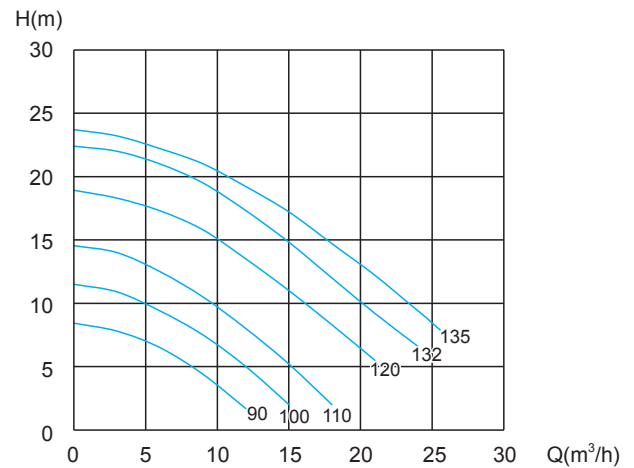
选择时需考虑留有安全余量 Safety tolerance should be reserved when selecting motor power



### SFB-5外形安装尺寸 Dimensions

Size	电机功率(Motor Power)				
	0.55KW	0.75KW	1.1KW	1.5KW	2.2KW
A	112	125	125	140	140
B	230	230	230	230	230
C	103	140	140	142	142
E	21	21	21	21	21
F	70	85	85	116	116
G	122	122	122	165	165
H max	170	180	180	220	220
H min	140	150	150	190	190
J	80	80	80	80	80
K	100	100	100	100	100
L	240	240	240	278	278
M	108	117	117	120	120

Size	ISO卡箍	DIN卡箍	SMS活接	DIN活接	ISO法兰	DIN法兰
D1	50.8	52	50.8	52	50.8	52
D2	38.1	40	38.1	40	38.1	40
N1	21.5	21.5	20	23	25	24
N2	21.5	21.5	20	22	25	24

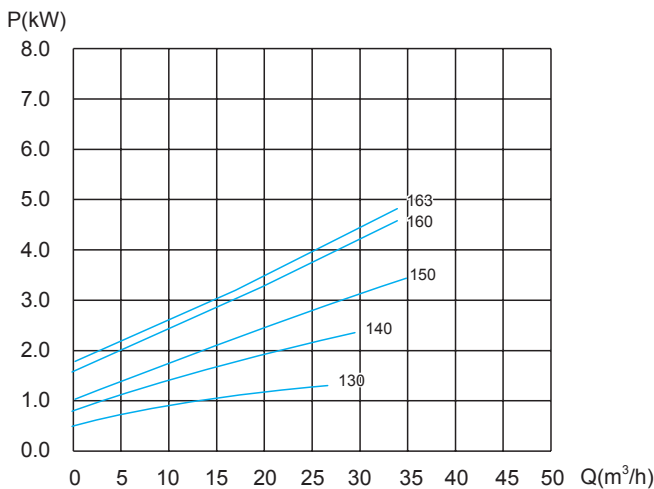
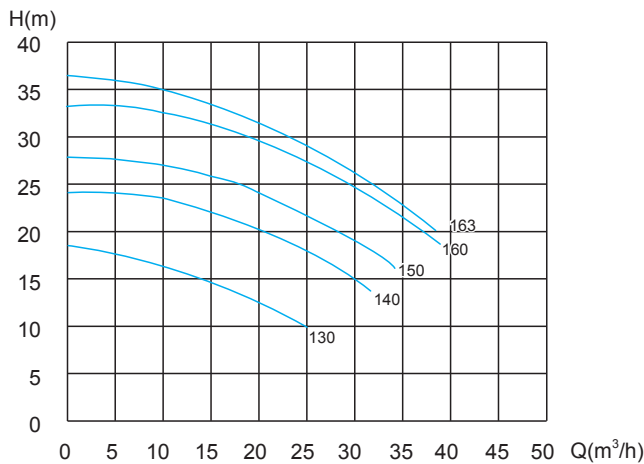
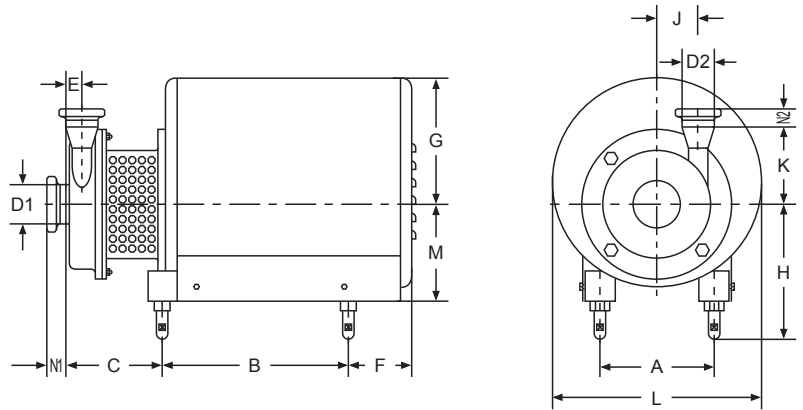


### 性能曲线 Performance Curve

介质: 20°C清水 误差: ±5% Medium: 20°C clean water Error: ±5%	转速: 2900r/min 频率: 50Hz Rotating Speed: 2900r/min Frequency: 50Hz	叶轮: 最大直径: 135mm 最小直径: 90mm Impeller: Max.Dia.: 135mm Min.Dia.: 90mm	进口通径: Φ50.8 DN50 出口通径: Φ38.1 DN40 Inlet Diameter: Φ50.8 DN50 Outlet Diameter: Φ38.1 DN40
---	---	--	---

选择时需考虑留有安全余量 Safety tolerance should be reserved when selecting motor power





## SFB-10外形安装尺寸 Dimensions

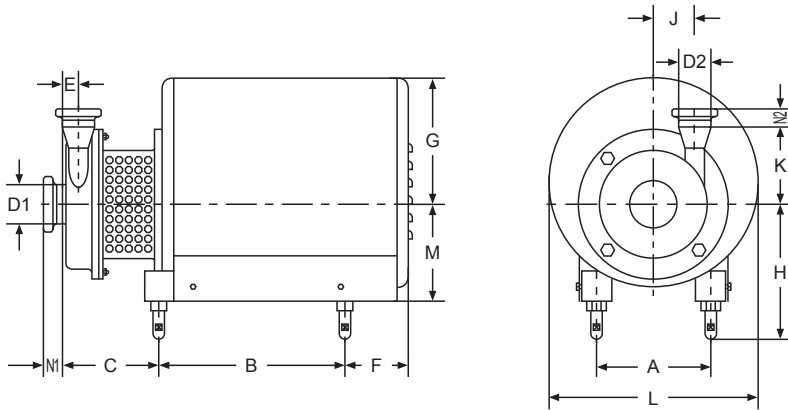
Size	电机功率(Motor Power)				
	1.5KW	2.2KW	3KW	4KW	5.5KW
A	145	145	170	190	216
B	224	224	269	269	328
C	155	155	148	155	176
E	23	23	23	23	23
F	116	116	116	116	160
G	165	165	210	210	215
H max	190	190	240	240	260
H min	160	160	210	210	230
J	88	88	88	88	88
K	145	145	145	145	145
L	278	278	348	348	378
M	120	120	140	152	182

Size	ISO 卡箍	DIN 卡箍	SMS 活接	DIN 活接	ISO 法兰	DIN 法兰
D1	63.5	70	63.5	70	63.5	70
D2	50.8	52	50.8	52	50.8	52
N1	21.5	21.5	24	25	25	24
N2	21.5	21.5	20	23	25	24

## 性能曲线 Performance Curve

介质: 20°C清水 误差: ±5% Medium: 20°C clean water Error: ±5%	转速: 2900r/min 频率: 50Hz Rotating Speed: 2900r/min Frequency: 50Hz	叶轮: 最大直径: 163mm 最小直径: 130mm Impeller: Max.Dia.: 163mm Min.Dia.: 130mm	进口通径: Φ63.5 DN65 出口通径: Φ50.8 DN50 Inlet Diameter: Φ63.5 DN65 Outlet Diameter: Φ50.8 DN50
---	---	--	---

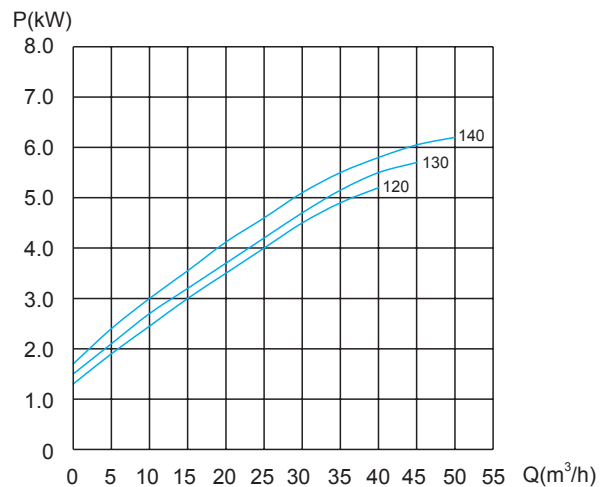
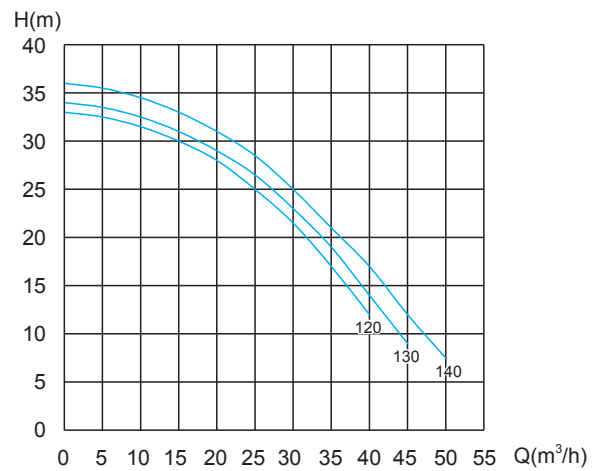
选择时需考虑留有安全余量 Safety tolerance should be reserved when selecting motor power



### SFB-15外形安装尺寸 Dimensions

Size	电机功率(Motor Power)		
	3KW	4KW	5.5KW
A	170	190	216
B	269	269	328
C	148	155	176
E	43	43	43
F	116	116	160
G	210	210	215
H max	240	240	260
H min	210	210	230
J	88	88	88
K	145	145	145
L	348	348	378
M	140	152	182

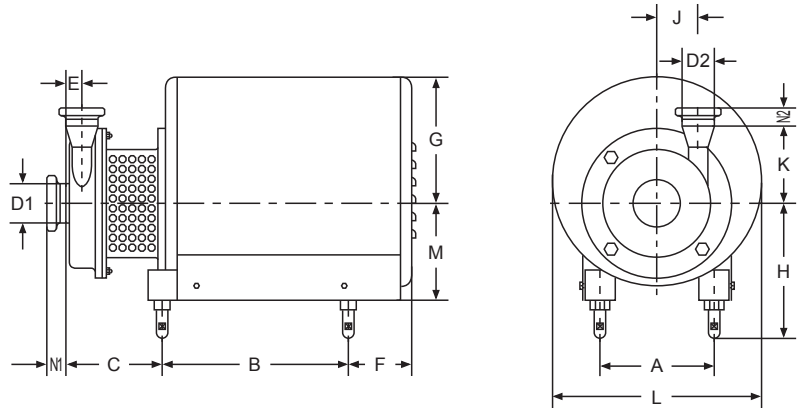
Size	ISO卡箍	DIN卡箍	SMS活接	DIN活接	ISO法兰	DIN法兰
D1	101.6	104	101.6	104	101.6	104
D2	76.1	85	76.1	85	76.1	85
N1	28	28	35	30	25	24
N2	21.5	21.5	24	30	25	24



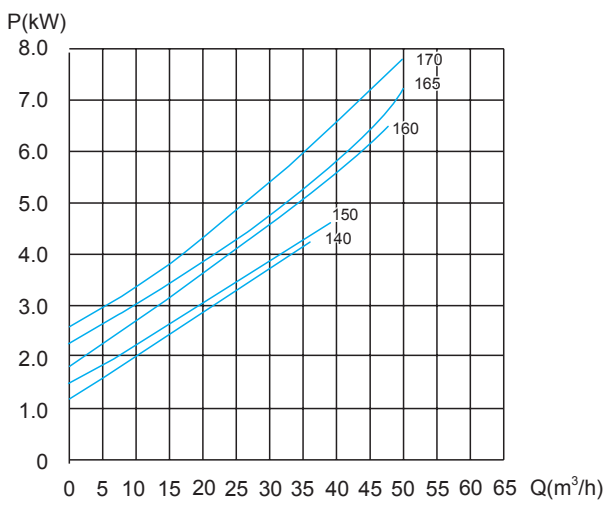
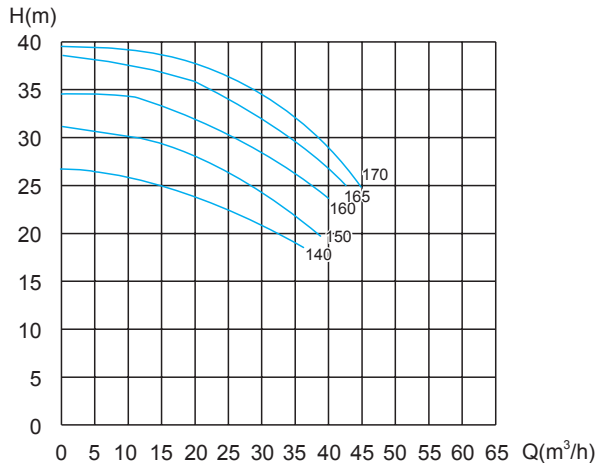
### 性能曲线 Performance Curve

介质: 20°C清水 误差: ±5% Medium: 20°C clean water Error: ±5%	转速: 2900r/min 频率: 50Hz Rotating Speed: 2900r/min Frequency: 50Hz	叶轮: 最大直径: 140mm 最小直径: 120mm Impeller: Max.Dia.: 140mm Min.Dia.: 120mm	进口通径: Φ101.6 DN100 出口通径: Φ76.1 DN80 Inlet Diameter: Φ101.6 DN100 Outlet Diameter: Φ76.1 DN80
---	---	--	---

选择时需考虑留有安全余量 Safety tolerance should be reserved when selecting motor power



卫生泵系列



## SFB-20外形安装尺寸 Dimensions

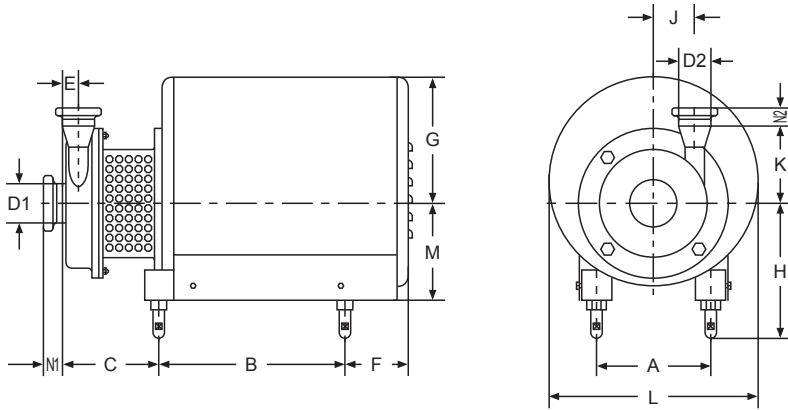
Size	电机功率(Motor Power)			
	3KW	4KW	5.5KW	7.5KW
A	170	190	216	216
B	269	269	328	328
C	148	155	176	176
E	27	27	27	27
F	116	116	160	160
G	210	210	215	215
H max	240	240	260	260
H min	210	210	230	230
J	89	89	89	89
K	145	145	145	145
L	348	348	378	378
M	140	152	182	182

Size	ISO卡箍	DIN卡箍	SMS活接	DIN活接	ISO法兰	DIN法兰
D1	63.5	70	63.5	70	63.5	70
D2	50.8	52	50.8	52	50.8	52
N1	21.5	21.5	24	25	25	24
N2	21.5	21.5	20	23	25	24

## 性能曲线 Performance Curve

介质: 20℃清水 误差: ±5% Medium: 20℃ clean water Error: ±5%	转速: 2900r/min 频率: 50Hz Rotating Speed: 2900r/min Frequency: 50Hz	叶轮: 最大直径: 170mm 最小直径: 140mm Impeller: Max.Dia.: 170mm Min.Dia.: 140mm	进口通径: Φ63.5 DN65 出口通径: Φ50.8 DN50 Inlet Diameter: Φ63.5 DN65 Outlet Diameter: Φ50.8 DN50
---	---	--	---

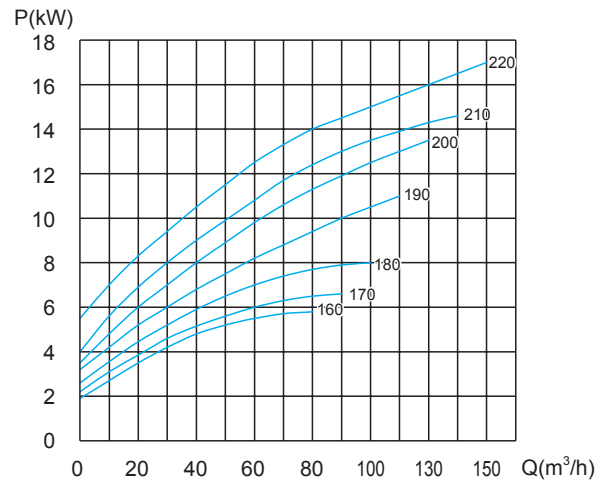
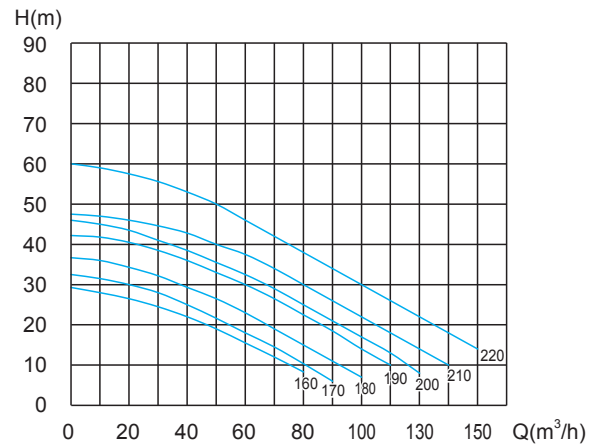
选择时需考虑留有安全余量 Safety tolerance should be reserved when selecting motor power



## SFB-25外形安装尺寸 Dimensions

Size	电机功率(Motor Power)				
	4KW	5.5KW	7.5KW	11KW	15KW
A	190	216	216	254	254
B	269	328	328	400	400
C	155	176	176	232	232
E	32	32	32	32	32
F	116	160	160	188	188
G	210	215	215	270	270
H max	240	260	260	300	300
H min	210	230	230	260	260
J	88	88	88	107.5	107.5
K	145	145	145	194	194
L	348	378	378	453	453
M	152	182	182	210	210

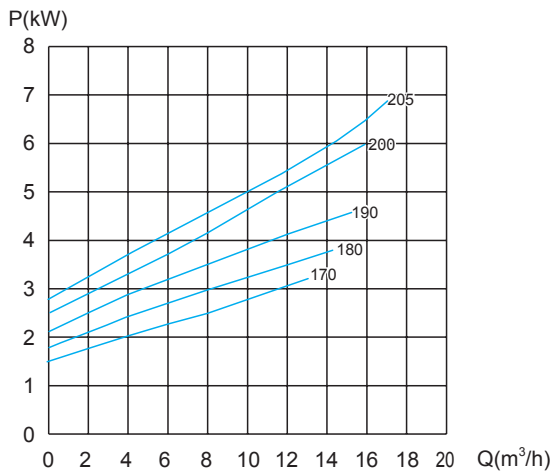
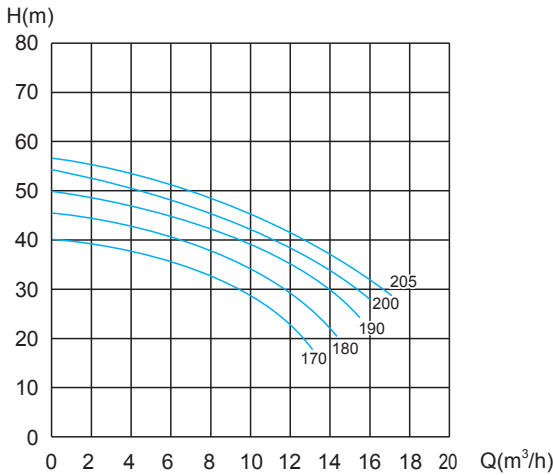
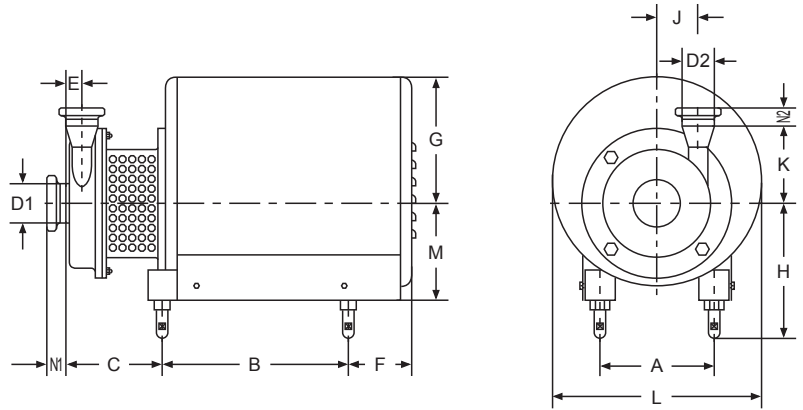
Size	ISO卡箍	DIN卡箍	SMS活接	DIN活接	ISO法兰	DIN法兰
D1	76.1	85	76.1	85	76.1	85
D2	63.5	70	63.5	70	63.5	70
N1	21.5	21.5	24	26	25	24
N2	21.5	21.5	24	26	25	24



## 性能曲线 Performance Curve

介质: 20℃清水 误差: ±5% Medium: 20℃ clean water Error: ±5%	转速: 2900r/min 频率: 50Hz Rotating Speed: 2900r/min Frequency: 50Hz	叶轮: 最大直径: 220mm 最小直径: 160mm Impeller: Max.Dia.: 220mm Min.Dia.: 160mm	进口通径: Φ76.1 DN80 出口通径: Φ63.5 DN65 Inlet Diameter: Φ76.1 DN80 Outlet Diameter: Φ63.5 DN65
---	---	--	---

选择时需考虑留有安全余量 Safety tolerance should be reserved when selecting motor power



### SFB-30外形安装尺寸 Dimensions

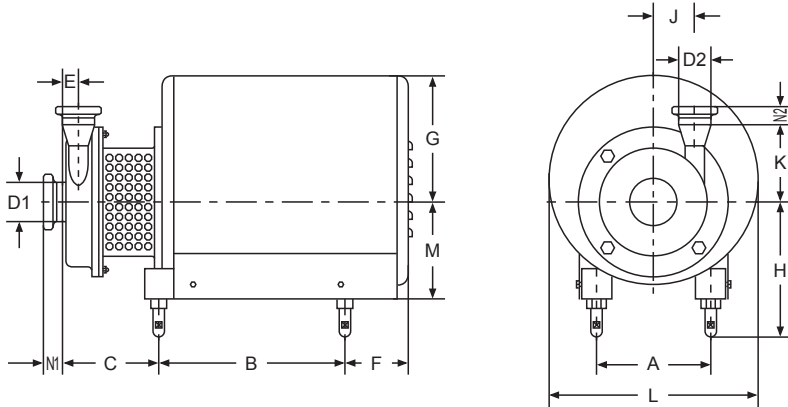
Size	电机功率(Motor Power)			
	3KW	4KW	5.5KW	7.5KW
A	170	190	216	216
B	269	269	328	328
C	118	125	156	156
E	25	25	25	25
F	116	116	160	160
G	210	210	215	215
H max	240	240	260	260
H min	210	210	230	230
J	97	97	97	97
K	150	150	150	150
L	348	348	378	378
M	140	152	182	182

Size	ISO卡箍	DIN卡箍	SMS活接	DIN活接	ISO法兰	DIN法兰
D1	38.1	40	38.1	40	38.1	40
D2	25.4	28	25.4	28	25.4	28
N1	21.5	21.5	20	22	25	24
N2	21.5	21.5	15	22	25	24

### 性能曲线 Performance Curve

介质: 20°C清水 误差: ±5% Medium: 20°C clean water Error: ±5%	转速: 2900r/min 频率: 50Hz Rotating Speed: 2900r/min Frequency: 50Hz	叶轮: 最大直径: 220mm 最小直径: 170mm Impeller: Max.Dia.: 220mm Min.Dia.: 170mm	进口通径: Φ38.1 DN40 出口通径: Φ25.4 DN25 Inlet Diameter: Φ38.1 DN40 Outlet Diameter: Φ25.4 DN25
---	---	--	---

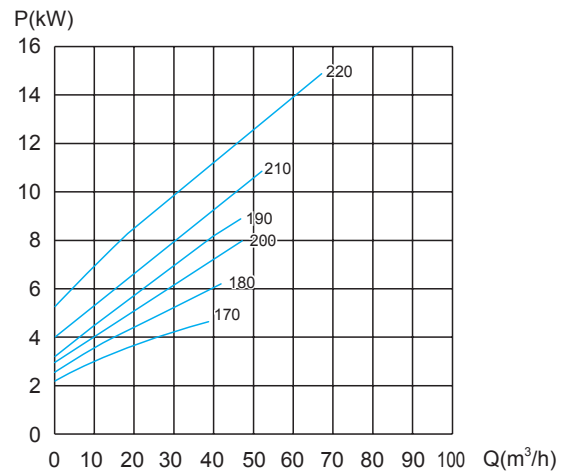
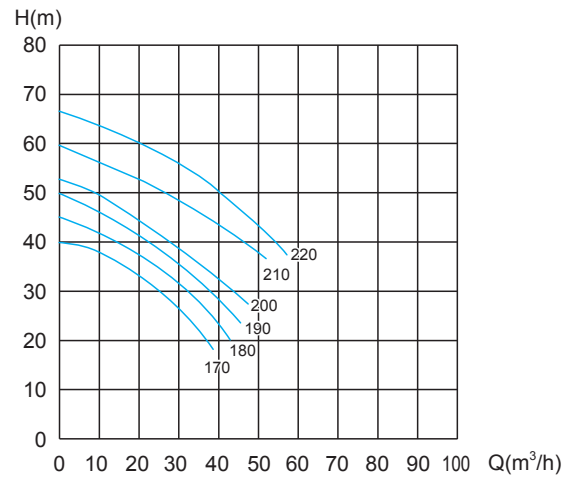
选择时需考虑留有安全余量 Safety tolerance should be reserved when selecting motor power



## SFB-35外形安装尺寸 Dimensions

Size	电机功率(Motor Power)				
	4KW	5.5KW	7.5KW	11KW	15KW
A	190	216	216	254	254
B	269	328	328	400	400
C	155	176	176	232	232
E	23	23	23	23	23
F	116	160	160	188	188
G	210	215	215	270	270
H max	240	260	260	300	300
H min	210	230	230	260	260
J	88	88	88	117	117
K	145	145	145	194	194
L	348	378	378	453	453
M	152	182	182	210	210

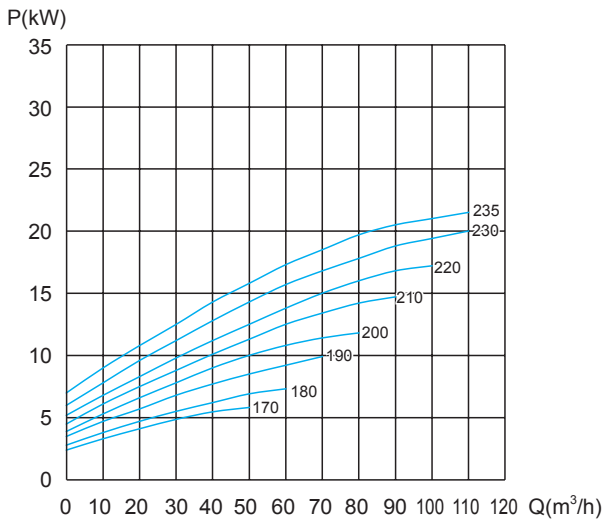
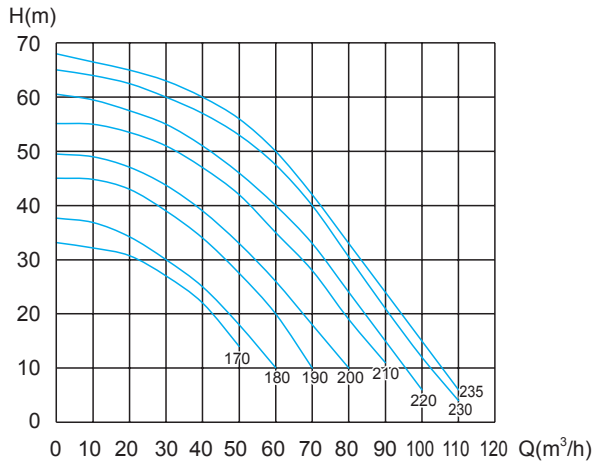
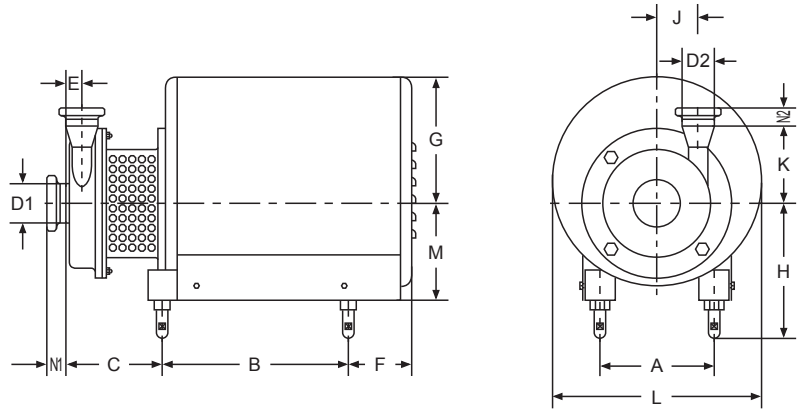
Size	ISO卡箍	DIN卡箍	SMS活接	DIN活接	ISO法兰	DIN法兰
D1	63.5	70	63.5	70	63.5	70
D2	50.8	52	50.8	52	50.8	52
N1	21.5	21.5	24	25	25	24
N2	21.5	21.5	20	23	25	24



## 性能曲线 Performance Curve

介质: 20°C清水 误差: ±5% Medium: 20°C clean water Error: ±5%	转速: 2900r/min 频率: 50Hz Rotating Speed: 2900r/min Frequency: 50Hz	叶轮: 最大直径: 220mm 最小直径: 170mm Impeller: Max.Dia.: 220mm Min.Dia.: 170mm	进口通径: Φ63.5 DN65 出口通径: Φ50.8 DN50 Inlet Diameter: Φ63.5 DN65 Outlet Diameter: Φ50.8 DN50
---	---	--	---

选择时需考虑留有安全余量 Safety tolerance should be reserved when selecting motor power



### SFB-40外形安装尺寸 Dimensions

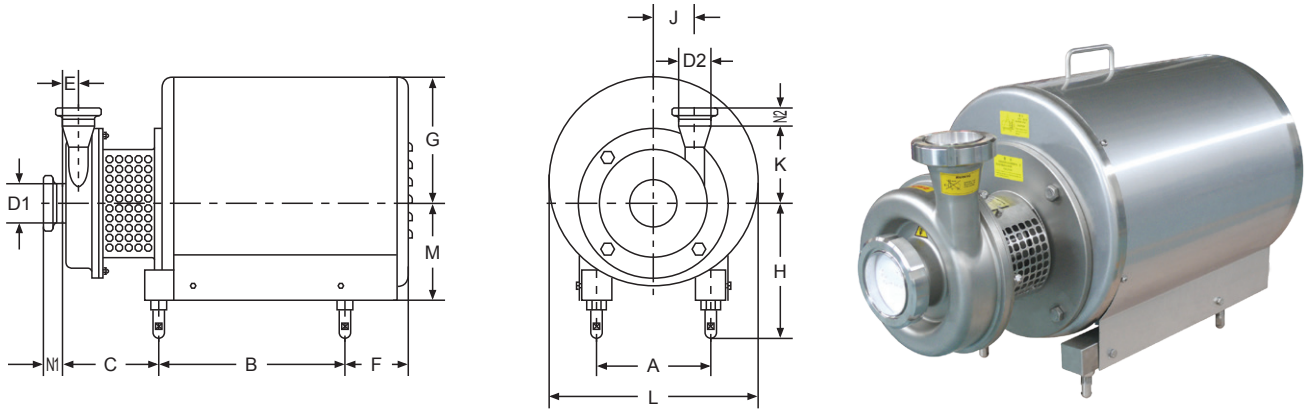
Size	电机功率(Motor Power)				
	7.5KW	11KW	15KW	18.5KW	22KW
A	216	254	254	254	279
B	328	400	400	400	390
C	176	232	232	232	250
E	28	28	28	28	28
F	160	188	188	188	200
G	215	270	270	270	285
H max	260	300	300	300	320
H min	230	260	260	260	280
J	128	128	128	128	128
K	145	194	194	194	194
L	378	453	453	453	470
M	182	210	210	210	230

Size	ISO卡箍	DIN卡箍	SMS活接	DIN活接	ISO法兰	DIN法兰
D1	76.1	85	76.1	85	76.1	85
D2	63.5	70	63.5	70	63.5	70
N1	21.5	21.5	24	30	25	24
N2	21.5	21.5	24	25	25	24

### 性能曲线 Performance Curve

介质: 20℃清水 误差: ±5% Medium: 20℃ clean water Error: ±5%	转速: 2900r/min 频率: 50Hz Rotating Speed: 2900r/min Frequency: 50Hz	叶轮: 最大直径: 235mm 最小直径: 170mm Impeller: Max.Dia.: 235mm Min.Dia.: 170mm	进口通径: Φ76.1 DN80 出口通径: Φ63.5 DN65 Inlet Diameter: Φ76.1 DN80 Outlet Diameter: Φ63.5 DN65
---	---	--	---

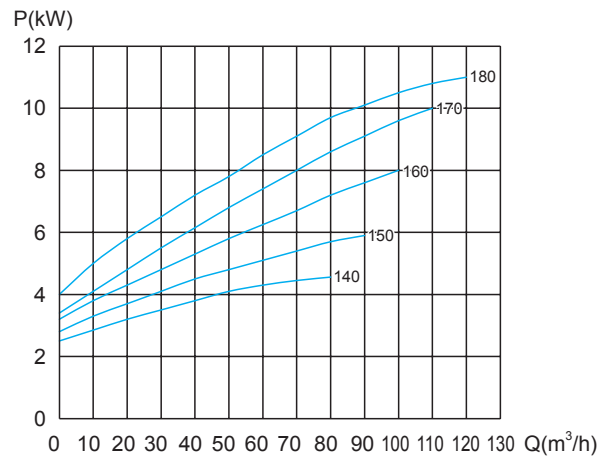
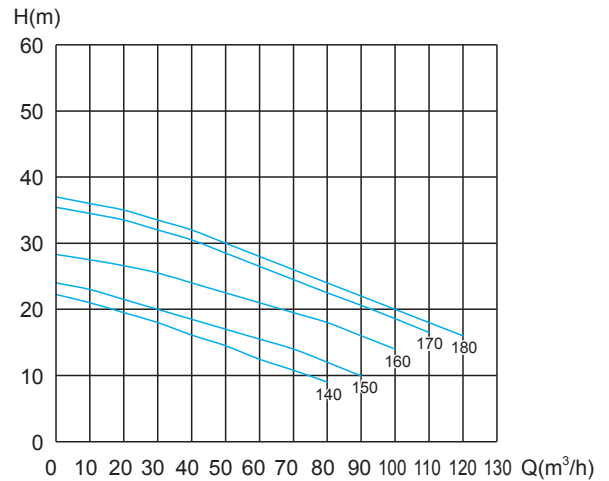
选择时需考虑留有安全余量 Safety tolerance should be reserved when selecting motor power



### SFB-45外形安装尺寸 Dimensions

Size	电机功率(Motor Power)		
	4KW	5.5/7.5KW	11/15/18.5KW
A	190	216	254
B	269	330	440
C	155	183	215
E	41	41	41
F	116	160	175
G	210	263	310
H max	240	282	310
H min	210	232	260
J	88	117	117
K	145	194	194
L	348	360	410
M	152	182	210

Size	ISO卡箍	DIN卡箍	SMS活接	DIN活接	ISO法兰	DIN法兰
D1	101.6	104	101.6	104	101.6	104
D2	76.1	85	76.1	85	76.1	85
N1	21.5	28	35	30	25	24
N2	21.5	21.5	24	30	25	24

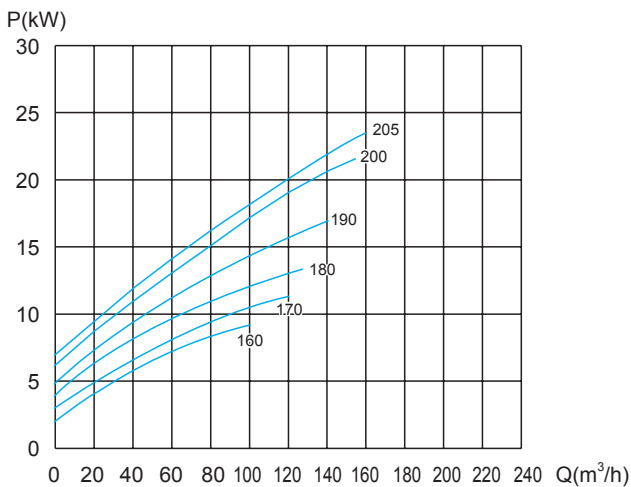
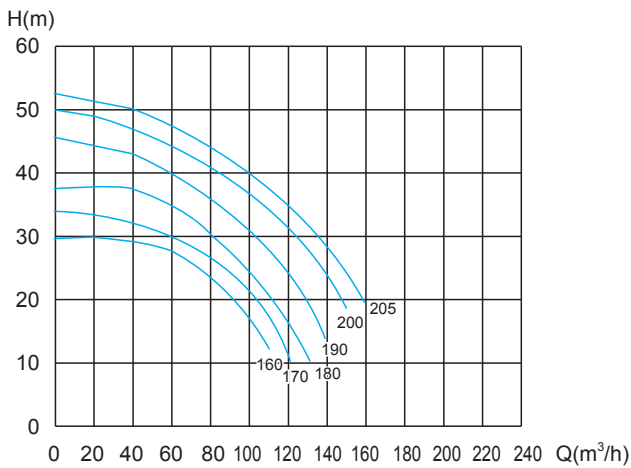
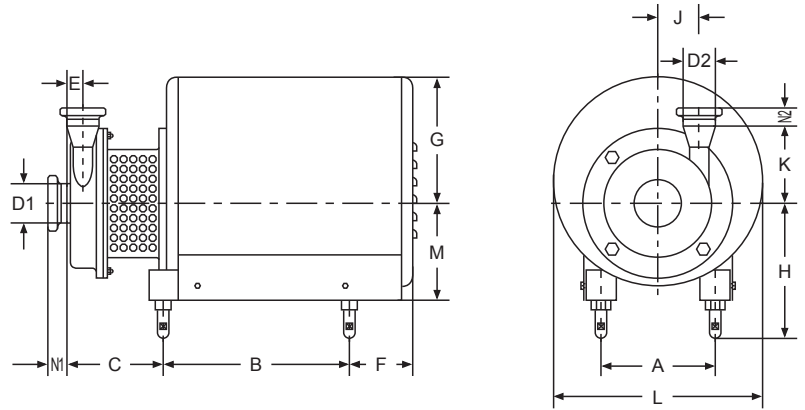


### 性能曲线 Performance Curve

介质: 20°C清水 误差: ±5% Medium: 20°C clean water Error: ±5%	转速: 2900r/min 频率: 50Hz Rotating Speed: 2900r/min Frequency: 50Hz	叶轮: 最大直径: 180mm 最小直径: 140mm Impeller: Max.Dia.: 180mm Min.Dia.: 140mm	进口通径: Φ101.6 DN100 出口通径: Φ76.1 DN80 Inlet Diameter: Φ101.6 DN100 Outlet Diameter: Φ76.1 DN80
---	---	--	---

选择时需考虑留有安全余量 Safety tolerance should be reserved when selecting motor power





## SFB-50 外形安装尺寸 Dimensions

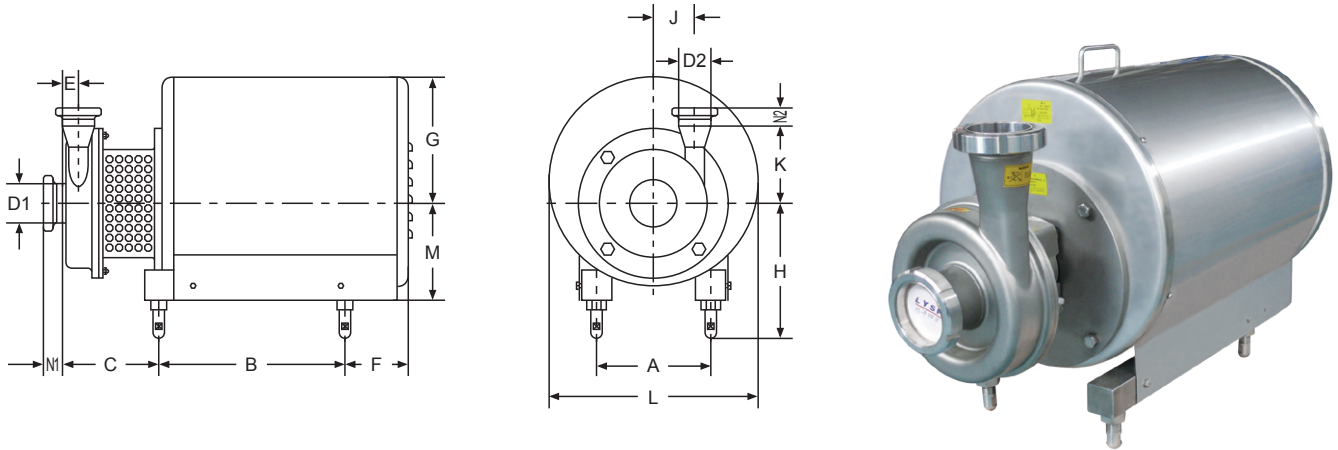
Size	电机功率(Motor Power)		
	5.5/7.5KW	11/15/18.5KW	22KW
A	216	254	279
B	330	440	390
C	183	215	250
E	25	25	25
F	116	116	160
G	210	210	215
H max	240	240	260
H min	210	210	230
J	97	97	97
K	150	150	150
L	348	348	378
M	140	152	182

Size	ISO 卡箍	DIN 卡箍	SMS 活接	DIN 活接	ISO 法兰	DIN 法兰
D1	101.6	104	101.6	104	101.6	104
D2	76.1	85	76.1	85	76.1	85
N1	28	28	35	30	25	24
N2	21.5	21.5	24	30	25	24

## 性能曲线 Performance Curve

介质: 20°C清水 误差: ±5% Medium: 20°C clean water Error: ±5%	转速: 2900r/min 频率: 50Hz Rotating Speed: 2900r/min Frequency: 50Hz	叶轮: 最大直径: 205mm 最小直径: 160mm Impeller: Max.Dia.: 205mm Min.Dia.: 160mm	进口通径: Φ101.6 DN100 出口通径: Φ76.1 DN80 Inlet Diameter: Φ101.6 DN100 Outlet Diameter: Φ76.1 DN80
---	---	--	---

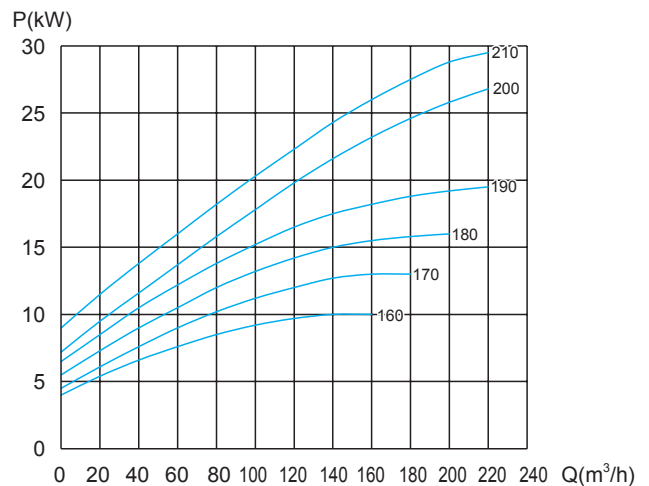
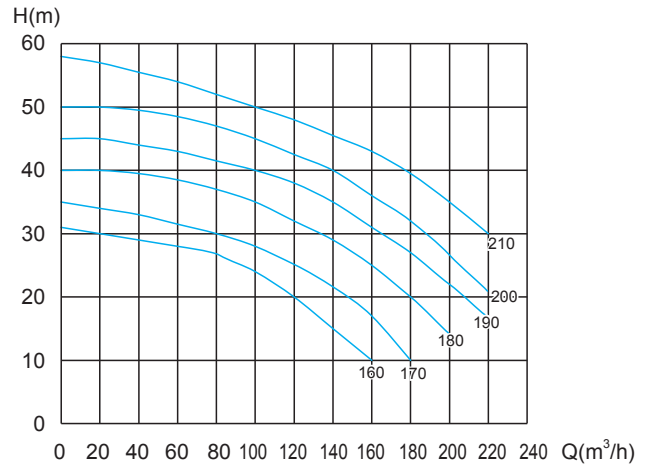
选择时需考虑留有安全余量 Safety tolerance should be reserved when selecting motor power



### SFB-60 外形安装尺寸 Dimensions

Size	电机功率(Motor Power)			
	5.5/7.5KW	11/15/18.5KW	22KW	30KW
A	216	254	279	318
B	330	440	390	480
C	183	215	250	250
E	62	62	62	62
F	160	175	200	200
G	263	310	285	350
H max	282	310	320	370
H min	232	260	280	330
J	102	102	102	102
K	194	194	194	194
L	360	410	470	560
M	182	210	230	260

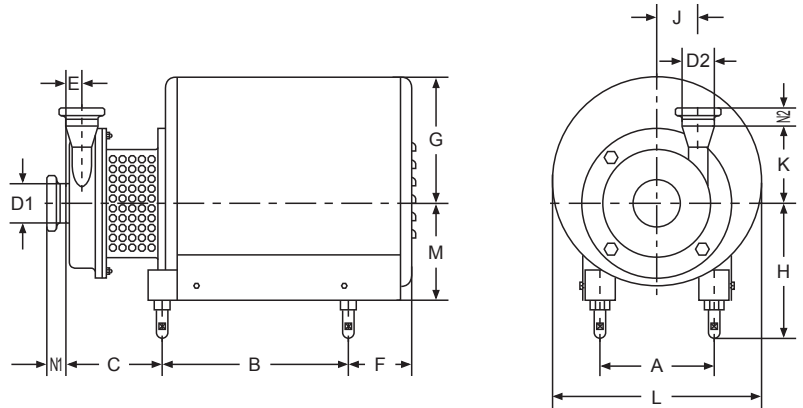
Size	ISO 卡箍	DIN 卡箍	SMS 活接	DIN 活接	ISO 法兰	DIN 法兰
D1	101.6	104	101.6	104	101.6	104
D2	101.6	104	101.6	104	101.6	104
N1	28	28	35	40	25	24
N2	28	28	35	30	25	24



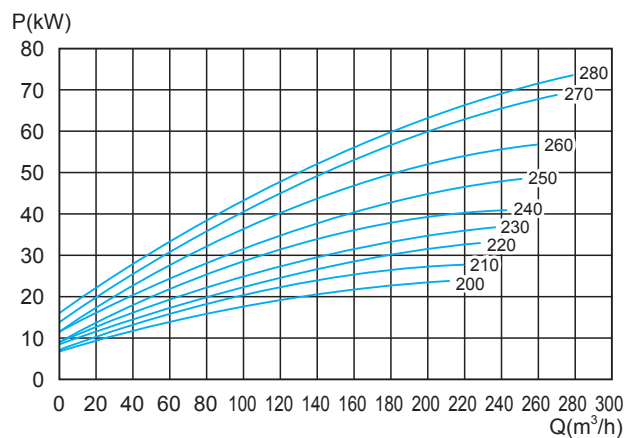
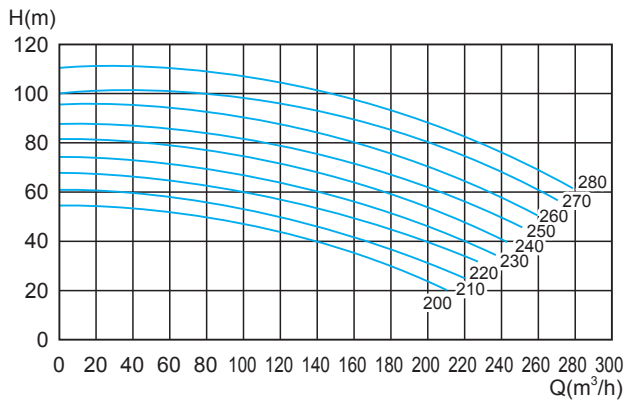
### 性能曲线 Performance Curve

介质: 20°C清水 误差: ±5% Medium: 20°C clean water Error: ±5%	转速: 2900r/min 频率: 50Hz Rotating Speed: 2900r/min Frequency: 50Hz	叶轮: 最大直径: 210mm 最小直径: 160mm Impeller: Max.Dia.: 210mm Min.Dia.: 160mm	进口通径: Φ101.6 DN100 出口通径: Φ101.6 DN100 Inlet Diameter: Φ101.6 DN100 Outlet Diameter: Φ101.6 DN100
---	---	--	---

选择时需考虑留有安全余量 Safety tolerance should be reserved when selecting motor power



## SFB-70外形安装尺寸 Dimensions



Size	电机功率(Motor Power)				
	18.5KW	22KW	30KW	45KW	55KW
A	254	279	318	356	406
B	400	390	480	510	604
C	232	250	250	300	315
E	25	25	25	25	25
F	188	200	200	300	300
G	270	285	350	364	405
H max	300	320	370	400	400
H min	260	280	330	360	360
J	117	117	117	140	140
K	194	194	194	255	255
L	453	470	560	600	690
M	210	230	260	285	310

Size	ISO 卡箍	DIN 卡箍	SMS 活接	DIN 活接	ISO 法兰	DIN 法兰
D1	101.6	104	101.6	104	101.6	104
D2	76.1	85	76.1	85	76.1	85
N1	28	28	35	30	25	24
N2	21.5	21.5	24	30	25	24

## 性能曲线 Performance Curve

介质: 20℃清水 误差: ±5% Medium: 20℃ clean water Error: ±5%	转速: 2900r/min 频率: 50Hz Rotating Speed: 2900r/min Frequency: 50Hz	叶轮: 最大直径: 280mm 最小直径: 200mm Impeller: Max.Dia.: 280mm Min.Dia.: 200mm	进口通径: Φ101.6 DN100 出口通径: Φ76.1 DN80 Inlet Diameter: Φ101.6 DN100 Outlet Diameter: Φ76.1 DN80
---	---	--	---

选择时需考虑留有安全余量 Safety tolerance should be reserved when selecting motor power